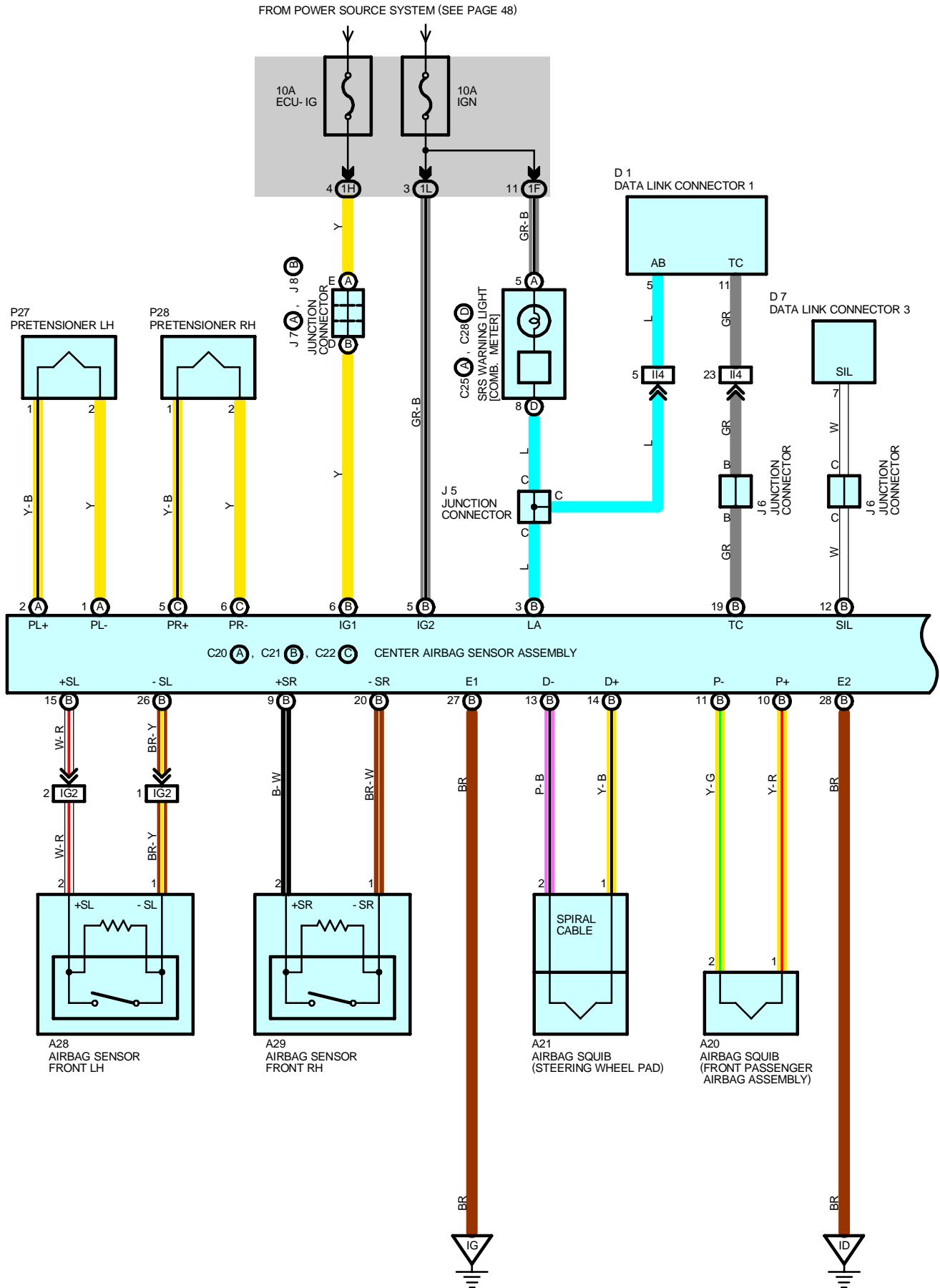
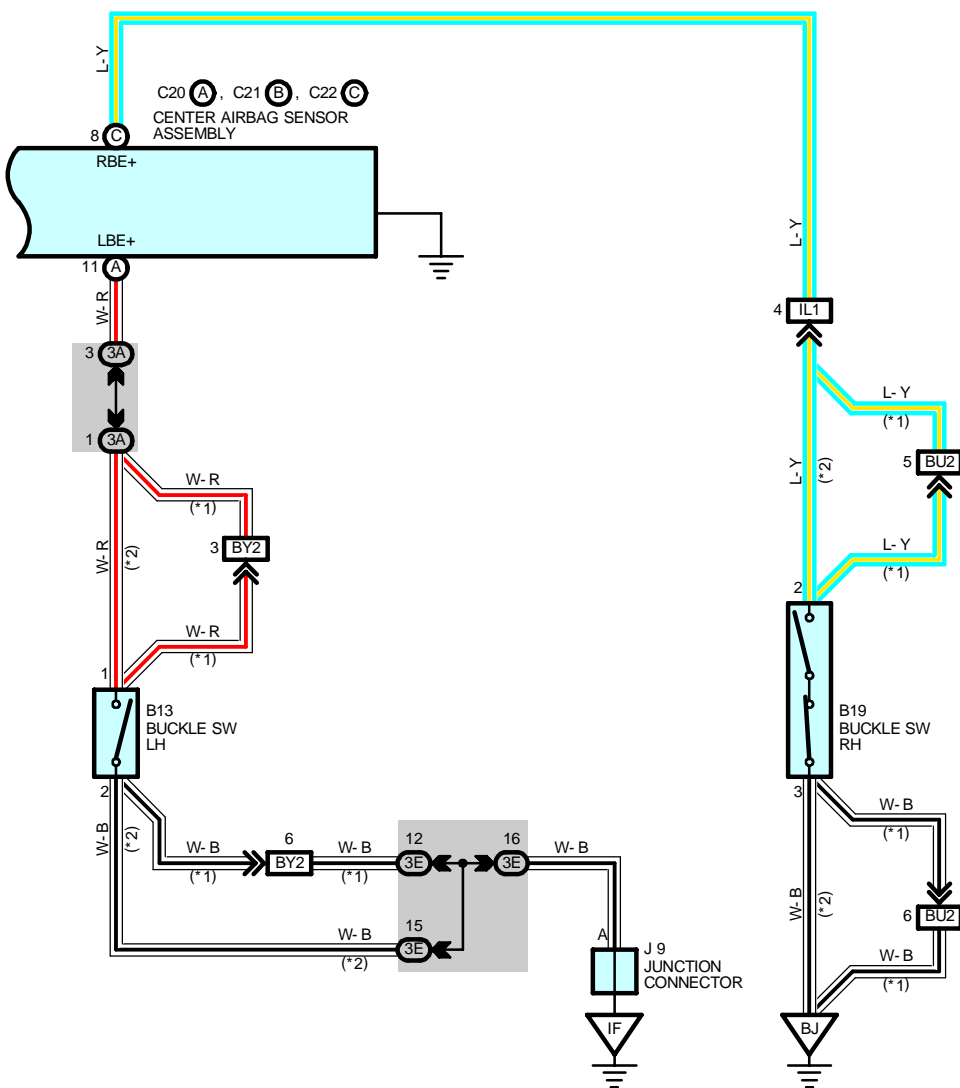


NOTICE: When inspecting or repairing the SRS, perform the operation in accordance with the following precautionary instructions and the procedure and precautions in the Repair Manual for the applicable model year.

- Malfunction symptoms of the SRS are difficult to confirm, so the DTCs become the most important source of information when troubleshooting. When troubleshooting the SRS, always inspect the DTCs before disconnecting the battery.
- **Work must be started after 90 seconds from when the ignition switch is turned to the "LOCK" position and the negative (-) terminal cable is disconnected from the battery.**  
(The SRS is equipped with a back-up power source so that if work is started within 90 seconds from disconnecting the negative (-) terminal cable of the battery, the SRS may be deployed.)
- When the negative (-) terminal cable is disconnected from the battery, the memory of the clock and audio system will be canceled. So before starting work, make a record of the contents memorized in the audio memory system. When work is finished, reset the audio systems as they were before and adjust the clock. This vehicle has power tilt and power telescopic steering, power seat and power outside rear view mirror which are all equipped with memory function. However, it is not possible to make a record of the memory contents. So when the work is finished, it will be necessary to explain this fact to the customer, and ask the customer to adjust the features and reset the memory. To avoid erasing the memory in each memory system, never use a back-up power supply from outside the vehicle.
- Before repairs, remove the airbag sensor if shocks are likely to be applied to the sensor during repairs.
- Do not expose the steering wheel pad, front passenger airbag assembly, pretensioner assembly, airbag sensor front assembly or center airbag sensor assembly directly to hot air or flames.
- Even in cases of a minor collision where the SRS does not deploy, the steering wheel pad, front passenger airbag assembly, pretensioner assembly, airbag sensor front assembly and center airbag sensor assembly should be inspected.
- Never use SRS parts from another vehicle. When replacing parts, replace them with new parts.
- Never disassemble and repair the steering wheel pad, front passenger airbag assembly, pretensioner assembly, airbag sensor front assembly or center airbag sensor assembly in order to reuse it.
- If the steering wheel pad, front passenger airbag assembly, pretensioner assembly, airbag sensor front assembly or center airbag sensor assembly has been dropped, or if there are cracks, dents or other defects in the case, bracket or connector, replace them with new ones.
- Use a volt/ohmmeter with high impedance (10 k $\Omega$ /V minimum) for troubleshooting the system's electrical circuits.
- Information labels are attached to the periphery of the SRS components. Follow the instructions on the notices.
- After work on the SRS is completed, perform the SRS warning light check.
- If the vehicle is equipped with a mobile communication system, refer to the precaution in the IN section of the Repair Manual.



\* 1 : W/ POWER SEAT  
 \* 2 : W/O POWER SEAT



## SYSTEM OUTLINE

The SRS is a driver and front passenger protection device which has a supplemental role to the seat belts. When the ignition SW is turned to ON position, the current from the ECU-IG, IGN fuse flows to the center airbag sensor assembly TERMINAL IG1, IG2.

In case an accident occurs while driving, when the frontal impact exceeds a predetermined level, the current from the ECU-IG or IGN fuse flows to center airbag sensor assembly TERMINALS D+, P+, PL+, PR+ to airbag squibs and pretensioners to center airbag sensor assembly TERMINALS D-, P-, PL-, PR- to TERMINALS E1, E2 or BODY GROUND to GROUND.

The current flows to the airbag squibs and pretensioners, and operates the airbag.

The airbag stored in the steering wheel pad is instantaneously expanded to soften the shock to the driver.

The airbag stored in the front passenger's instrument panel is instantaneously expanded to soften the shock to the front passenger.

The pretensioners ensure the seat belt restrainability.

## ○ : PARTS LOCATION

Code	See Page	Code		See Page	Code		See Page
A20	<a href="#">30</a>	C20	A	<a href="#">30</a>	J6		<a href="#">31</a>
A21	<a href="#">30</a>	C21	B	<a href="#">30</a>	J7	A	<a href="#">31</a>
A28	<a href="#">28</a>	C22	C	<a href="#">30</a>	J8	B	<a href="#">31</a>
A29	<a href="#">28</a>	C25	A	<a href="#">30</a>	J9		<a href="#">31</a>
B13	<a href="#">32 (w/o Power Seat)</a>	C28	D	<a href="#">30</a>	P27		<a href="#">33</a>
	<a href="#">34 (w/ Power Seat)</a>	D1		<a href="#">28</a>	P28		<a href="#">33</a>
B19	<a href="#">32 (w/o Power Seat)</a>	D7		<a href="#">30</a>			
	<a href="#">34 (w/ Power Seat)</a>	J5		<a href="#">31</a>			

## ○ : JUNCTION BLOCK AND WIRE HARNESS CONNECTOR

Code	See Page	Junction Block and Wire Harness (Connector Location)
1F	24	Cowl Wire and Driver Side J/B (Lower Finish Panel)
1H		
1L		
3A	26	Cowl Wire and Center J/B (Near the Steering Column Tube)
3E		

## □ : CONNECTOR JOINING WIRE HARNESS AND WIRE HARNESS

Code	See Page	Joining Wire Harness and Wire Harness (Connector Location)
IG2	38	Engine Room Main Wire and Cowl Wire (Left Kick Panel)
II4	40	Engine Wire and Cowl Wire (On the Glove Box)
IL1	40	Cowl Wire and Floor Wire (Right Kick Panel)
BU2	44	Floor Wire and Seat No.2 Wire (Under the Front Passenger's Seat)
BY2	44	Cowl Wire and Seat No.1 Wire (Under the Driver's Seat)

## ▽ : GROUND POINTS

Code	See Page	Ground Points Location
ID	38	Left Kick Panel
IF	38	Cowl Side Panel RH
IG	38	Right Kick Panel
BJ	42	Right Quarter Panel Inner

